

How does the translator work?.....2
What languages are supported?.....3

MaintSmart

Enterprise

version 3.4

User

Guide

for the

MaintSmart Translator

MaintSmart Translator - An Overview.

How does it work?

- The MaintSmart translator gives you the opportunity to translate the English text in MaintSmart into any 8-bit character language supported by your system. The translator does NOT automatically translate for you.
- A multi-lingual English speaking person(s) (the translator) makes a copy of the text in MaintSmart using the Create New Language function in MaintSmart. This person then translates the copy of text from English to the language or languages of their choice.
- Once the language has been created it may be set as the 'default language'. When the MaintSmart program is subsequently run all literal text in the program and in all reports displays in the selected language (provided it has been translated from the original English).
- Although there are several thousand text items to translate there are also many shortcuts to speed up this process. Additionally the translation may be done as needed or in steps with the translated text displaying in selected language and all other text displaying in English.
- Each user workstation has a default language associated with it so when a user logs on the language is automatically loaded. This is stored in the HKEY_CURRENT_USER registry folder currently.

MaintSmart stores the text items in three separate data tables:

- **Screen objects:** screen button text, label text, screen tab text, column headers, etc.
- **Message text:** messages, excluding most error messages (future version).
- **Report text:** all literal text in 'Detail Reports' (Crystal Reports).

This translator also benefits the English speaker because the English speaker now has the ability to change all of the literal text in the program to something other than the default also.

For example: Perhaps the you don't want to call 'Work Orders' something else such as 'Service Orders' simply create a new 'language' called 'English A' (or whatever you want for that matter) and then start changing the literal text in this new language to suit your needs.

Grupo de la parte	Número de parte	Descripción	Cantidad	Unidad
Air Compressor	65757	ATQR 15, MIDGET TIME DELAY TRANSFORMER FUSE, 15 AMP. 600V., CLASS CC	17	ea
Air Compressor	1747-KTX	Allen Bradley Comm Card	18	ea
Air Compressor	88990-ABC	Wire Terminals	3	ea
Air Compressor	4593497	Flange Bearing	29	ea
Air Compressor	.125	1/4-20 bolts	10	ea
Air Compressor	1747-KTXA	Allen Bradley Comm Card	25	ea
Air Compressor	99999FF	Piston Ring Set	11	ea
Air Compressor	444-DDD	Bearing	5	ea
Air Compressor	R-998376	Ring .0009 X .375	7	ea
3 & S Press	YY44	Connecting Rod	5	ea

El inventario instaló

Fábrica: Sacramento | Tipo del artículo: Inventory | Pieza del asociado con: Air Compressor | Número interno de la identificación: 9400015

Vendedor preferido: Bob the Builder | Número de parte: 99999FF | Descripción de la parte: Piston Ring Set | Cantidad: 11 | Unidades: ea

Costo unitario: \$7.89 | Localización: H6T | Acción mínima: 4 | Acción máxima: 16 | Fecha adquirida: 9 /20/2006

Identificador (opcional): | Notas (opcionales):

El inventario parte los accesorios del archivo [cuadros, diagramas, impresiones, notas, los etc. opciones] Inventory Set Up

Nuevo | Quitar | Impresión | Visión | Nuevo | Quitar | Excepto | Cancelación

MaintSmart Translator - Language List

What Languages are Supported?

MaintSmart currently supports 8-bit (single byte characters that are supported by the target client computer. This may include the following languages (not limited to these however).

Hint: If you are not sure if MaintSmart supports the language try using the language in MaintSmart's translator!

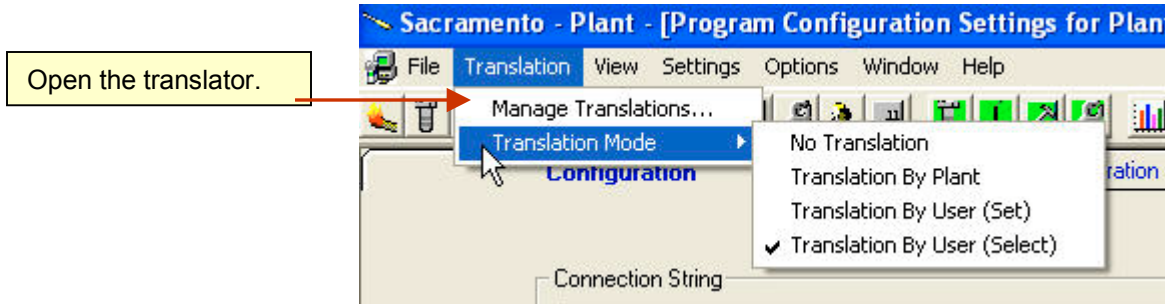
- Albanian
- Arabic (Windows Vista only)
- Basque
- Catalan
- Chinese (Windows Vista only)
- Croatian
- Czech
- Danish
- Dutch
- English
- Estonian
- Filipino (Tagalog)
- Finnish
- French
- German
- Greenlandic
- Hungarian
- Icelandic
- Irish
- Italian
- Latin
- Norwegian
- Polish (8859)
- Portuguese
- Romanian
- Russian (Windows Vista only)
- Serbian
- Slovenian
- Spanish
- Swedish
- Turkish

- any many more ...

Using the MaintSmart Translator - An Overview

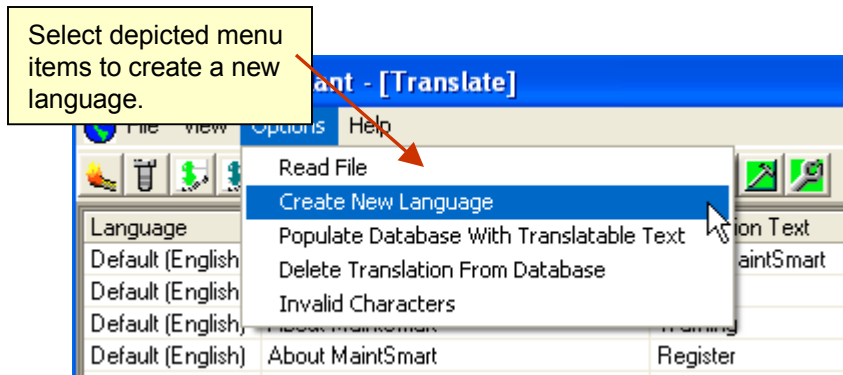
Accessing the Translator

1. Open the **Program Configuration** screen and then select the menu items Translations>>Manage Translations...



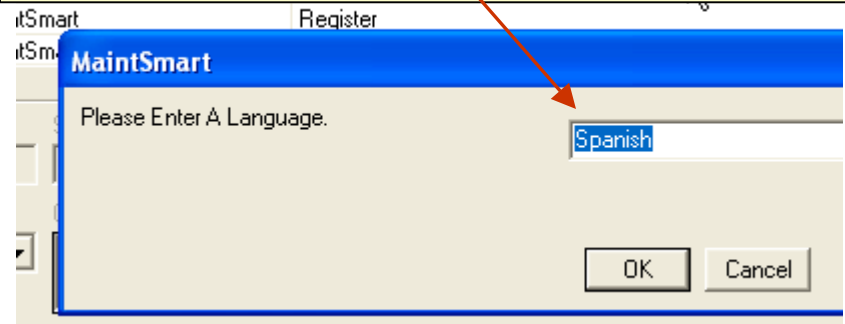
Create a New Language

When translator screen opens the Default English text is displayed. To create a new language select the menu items Options>>Create New Language. Type in the name of the language that you want to create. MaintSmart copies the entire 'Default (English)' language to the new language named 'Spanish' (for example). The Spanish language is now ready for you to translate into Spanish.



Type in new language.

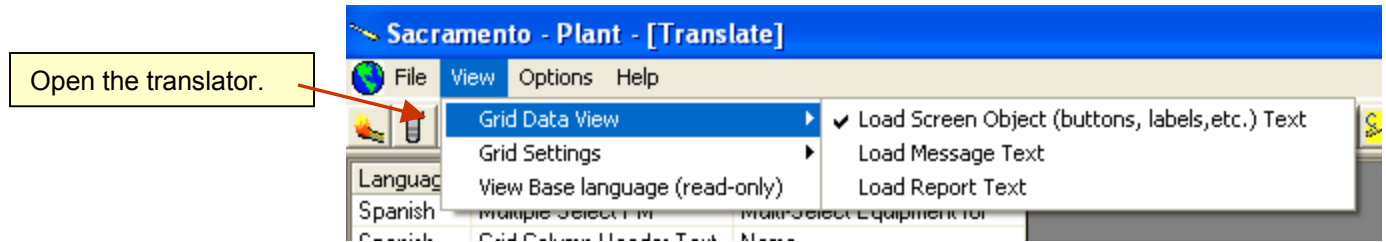
NOTE: this is simply a way for you to reference your new translation. MaintSmart does not automatically translate everything into the new language but rather copies all of the 'Default (English)' text and references it with the new language name.



Using the MaintSmart Translator - An Overview

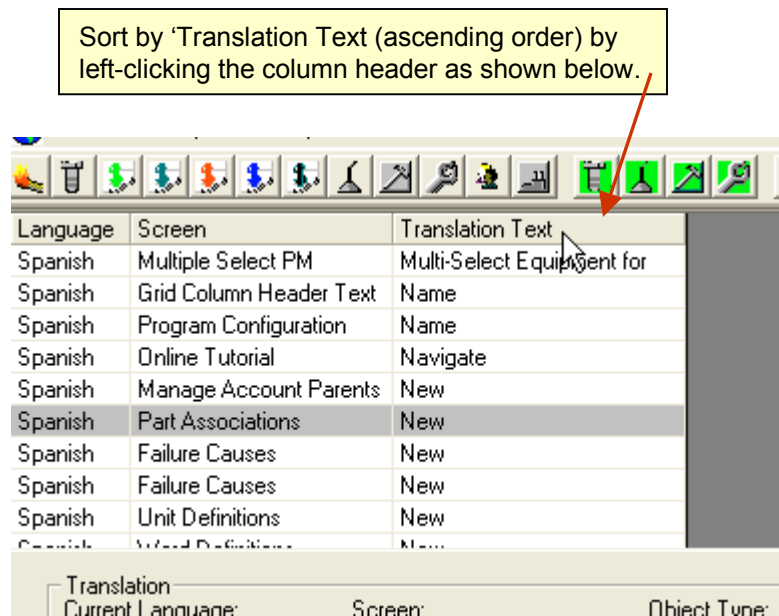
Selecting Translation Data Table

Once you have created the translation data choose which data table you want to work with from the menu items **View>>Grid Data View**.



Sorting the Data Table (grid)

Left-click the column header for the column you want to sort on any of the grid views. This makes it easy to group similar text items for bulk translations.



Using the MaintSmart Translator - Translating

Performing the Actual Translation

1. To enter a translation left-click the grid row that contains the Translation Text you want to change.

2. There are two different ways to select the text to be translated:

A. Select all or part of the source text from the Current Text box with your left mouse button (hold down and drag). Then copy/paste the replacement text over the text that appears in the replacement text box. This mode will cause MaintSmart to replace the selected text without an exact match to entire text string if: **Translate This Text Item Only** or **Translate All Instances of Selected Text** option is selected.

B. Simply replace the entire text in the Translation Text box by typing or copy/paste.

3. Once the replacement text has been entered by either Method 1 or Method 2 select the type of replacement to perform:

A. **Translate This Text Item Only:** This translates just that text item in that particular screen for that particular screen object, message or report variable. Only one text item is translated.

B. **Translate All Instances of Selected Text:** This option translates all instances of the source text in the data table currently in use (screen objects OR messages OR reports). This option will translate part of a matching text item. For example if the source text is 'Work Order' then the translator will translate all of the instances where it finds 'work order' including 'work orders', 'Work Order Labor', etc. This could easily lead to an erroneous translation but may be useful in English to English 'translations'.

C. **Translate All Instances of Selected Text All Messages, Screen Object, Reports:** This option translates all instances of this text in all data tables (i.e. reports, messages, screen objects.) This option requires an exact text match in all data tables and will not translate part of a matching text item.

Spanish	Manage Account Parents	New
Spanish	Part Associations	New
Spanish	Failure Causes	New
Spanish	Failure Causes	New
Spanish	Unit Definitions	New
Spanish	Unit Definitions	New

Translation
Current Language: Spanish
Translate To Language: Spanish
Current Text (optionally use mouse to select all or part of this text to replace with "New")
Replacement text box: New
 Replace ALL Instances of This Text (in box below) Found In Current Text -> With This Text In This Box
 Translation Text (this text replaces 'Current Text' in its entirety): New

Method 1: Select all or part of the text in the Current Text box. It then appears in the replacement text box.

Method 2: Replace source text in its entirety by typing or copy/paste.

Type or copy/paste translated text into the replacement text box.

Translate This Text Item Only
 Translate All Instances of Selected Text
 Translate All Instances of Selected Text All Messages, Screen Objects, Reports
Save

Chose what type of translation: one item, all of the identical items where not an exact match or all items where is an exact match in all object, messages and reports.

Using the MaintSmart Translator - Translating

Language	Screen	Translation Text
Spanish	Multiple Select PM	Multi-Select Equipment for
Spanish	Grid Column Header Text	Name
Spanish	Program Configuration	Name
Spanish	Online Tutorial	Navigate
Spanish	Manage Account Parents	New
Spanish	Part Associations	New
Spanish	Failure Causes	New
Spanish	Failure Causes	New
Spanish	Unit Definitions	New
Spanish	Word Definitions	New

Translation
Current Language: Spanish Screen: frmAddAss

To begin translation group up similar text items as shown. This helps indicate which items that can be translated in bulk initially. In this example nearly all of the screens have a button labeled 'New'

Translate This Text Item Only
 Translate All Instances of Selected Text
 Translate All Instances of Selected Text All Messages, Screen Objects, Reports

Save Cancel

Select this option to translate this text in all screens, messages and reports but only if an exact match is found.

Press the **Save** button results in all exact match instances of 'New' to be changed to 'Nuevo'.

Select this text with a left-click and drag. When you let go of mouse button selected text appears in replacement text box 'New'.

Translate To Language: Spanish

Current Text (optionally use mouse to select all or part of this text to replace with 'Trans

New

Replace ALL Instances of This Text (in box below) Found In Current Text ----> With This Text In This Box

New

Nuevd

Type or copy/paste the translated text 'Nuevo' over the selected source word 'New'.

Screen	Translation Text
Alternate Inventory Stock	Notes (optional)
Configure Inventory	Notify If Transfer Request
Purchasing	Notify When Purchasing
Manage Account Parents	Nuevo
Part Associations	Nuevo
Failure Causes	Nuevo
Failure Causes	Nuevo
Unit Definitions	Nuevo
Word Definitions	Nuevo
Manage Cost Center	Nuevo

ation
t Language: Screen: Obj

Using the MaintSmart Translator - Variables

Variables:

Equipment Hierarchy and Other Variables (visible in English (default) only before translation):

gstrTopLevelEntity = Top Level of Equipment Hierarchy Label
gstrPLEntity = Level 2A Equipment Hierarchy Label
gstrDeptEntity = Level 3 Equipment Hierarchy Label
gstrWAEntity = Level 2B Equipment Hierarchy Label
gstrEngEntity = MaintSmart Personnel Label
gstrSecurityLevel = Access Permission Level
gstrUserName = Logged in User Name

Runtime Variables:

Var1, Var2, Var3,...: Variables set by MaintSmart program.

Formatting Variable (used by program only)

vbCrLf = Carriage Return used by program to format messages.

NOTE: Variables: Var1, Var2, Var3, etc ANF gstrUserName and gstrSecurityLevel should NOT be changed when performing a translation. These variable obtain their value at run time from the program.

Important Note: When translation is initiated all equipment hierarchy labels (Plant, Plant Line, Department, etc <Example>) currently in use are used to replace the variables (gstrTopLevelEntity, gstrPLEntity, etc.) in the new translation. Therefore you will not see the original equipment hierarchy variables in any translation -- only in the untranslatable English (Default) language.

Translation Initiated...

Variables

gstrTopLevelEntity
gstrPLEntity
gstrDeptEntity
gstrWAEntity
gstrEngEntity

Variables Converted After Translation From English (Default):

Plant = Top Level of Equipment Hierarchy Label
Plant Line = Level 2A Equipment Hierarchy Label
Department = Level 3 Equipment Hierarchy Label
Work Area/Location = Level 2B Equipment Hierarchy Label
Engineer = MaintSmart Personnel Label

Variable Not Converted After Translation

Var1, Var2, Var3,...: Variables set by MaintSmart program.
vbCrLf = Carriage Return

Using the MaintSmart Translator - Variables

Language	Screen	ObjectType	Translation Text
Spanish	Parent Screen	MsgBox	Welcome User: gstrUserName !
Spanish	Parent Screen	Msgbox	User gstrUserName as a Member of Group: Var1 You May Only Log On to Your Company #Var2. Ask Your Adn User Name and Password for Logging On to Company # Var3 or Move You to an Administrator Group.
Spanish	Parent Screen	Msgbox	Welcome to Company # Var2 Administrator: gstrUserName From Company #Var1 !
Spanish	Parent Screen	DislayFrmMsn	Log Off and Close User: nstrl lserName?

Translation

Current Language: Screen: Object Type: Screen Object: Object Index: Item Number:

Translate To Language:

Current Text (optionally use mouse to select all or part of this text to replace with 'Translation Text' below):

User gstrUserName as a Member of Group: Var1 You May Only Log On to Your Company #Var2. Ask Your Administrator to Assign You a Separate User Name and Password for Logging On to Company # Var3 or Move You to an Administrator Group.

Display Variable Values When Applicable

Replace ALL Instances of This Text (in box below) Found In Current Text ----> With This Text In This Box

User name (runtime) variable. You should not change this but can move the position in the translated text string.

Var1 and Var2 are populated at runtime by the program and shouldn't be changed.

Checking this checkbox causes a value to be displayed instead of the variable name..

Current Text (optionally use mouse to select all or part of this text to replace with 'Translation Text' below):

User ADMIN as a Member of Group: Var1 You May Only Log On to Your Company #Var2. Ask Your Administrator to Assign You a Separate User Name and Password for Logging On to Company # Var3 or Move You to an Administrator Group.

Display Variable Values When Applicable

if This Text (in box below) Found In Current Text ----> With This Text In This Box

Using the MaintSmart Translator - Variables

Automatic copy to clipboard by checking either or both of these options. Alternatively simply click the **Copy** and the **Paste** buttons as needed.

Some of these options may speed up your translation.

Translations **Translate Options**

Set Translated Phrase/Character Case

- Ignore Case (no change to source text)
- Proper Case (easier to read)
- UPPER CASE (may take too much space)
- lower case

Copy Options

- Copy All Text On Grid Row Click
- Copy Selected Text On Mouse Select/Drag

Increasing	Freight Terms
Quotes	Freight Terms
Purchase Requisitions	Freight Terms
Purchase Requisition Approval	Freight Terms
Grid Column Header Text	Freight Terms

From Language: Screen: Object: Object Index: Item Number:

To Language: Current Text (optionally use mouse to select all or part of this text to replace with 'Translation Text' below):

Display Variable Values When Applicable

Replace ALL Instances of This Text (in box below) Found In Current Text ----> With This Text In This Box

Terms

Freight Terms

Translation Text (this text replaces 'Current Text')

Copied: Freight Terms...

Copy Paste

Click **Copy** to copy the text from this box (or other box as determined by radio button selection).

Copy status is displayed here as is paste status when **Paste** button is clicked.